



NEWSLETTER SPRING 2022

Newsletters and Events are posted on

GreaterFarmland.org

facebook.com/GreaterFarmland

TWO OF OUR FAVORITE EVENTS ARE BACK!!

MARK THESE DATES

GFCA is sponsoring the



Community Yard Sale, Sunday May 22

Get all of your items ready for sale!

Save the date for great shopping within our community.

Sign-up information will be posted on the listserv very soon.

Available to volunteer? Contact Scott Keohane, skeohane@yahoo.com.



And Community Day Party, Saturday June 11

Come to Farmland Elementary School between 1—4 pm
for a catered luncheon and fun for all ages.

Details on Page 3

WELCOME TO OUR NEW GFCA BOARD DIRECTORS

Thank you to Amir Khawaja, Jeremy Martinich, Jason Smith, and Elaine Spero, who are volunteering their time and expertise to our community as newly elected directors. They join Ed Rich, Marjorie Raley, Diana Keohane, Emily Mintz, Tom Biggs, and Julie Merberg. We are sad to see Toby Levin and Karen Fricke leave us for new adventures in other climes. We all wish them well and are so grateful for their tireless years of service to our community.

“NEIGHBOR TALKS: ENVIRONMENTALISM AT HOME”

ZOOM SERIES

If you missed the March 23 General Meeting with our discussion of **Reduce/Reuse/Recycle**, go to greaterfarmland.org/caring-for-our-environment for an extensive list of Reduce/Reuse/Recycle options. If you have addition reuse/recycling services or locations to share, please email us at info@greaterfarmland.org.



Session 1 of the series was on April 25, with a discussion by neighbors of their experiences with solar electric generation systems.

Session 2: Creating and Maintaining a Native Plants Garden. A Presentation by the creators of the Pike & Rose Native Plants Demonstration Gardens, co-sponsored by the Greater Farmland Garden Club

Wednesday, May 11th

7:30-8:30 pm

on Zoom, link to be posted on the listserv

A Special Presentation and Q&A with Kate Ries and Dan Cook from Clinton-Ries Landscape Architects, designers of Pike & Rose native plants gardens and the grounds of American University. They will discuss design principles, the aesthetics of using native plants, plant selection process, the new Market Street garden “in progress,” as well as practical advice on installing and maintaining your native plants garden.

Two more sessions to be scheduled: A follow-up on eco-landscaping and a session on energy savings at home, which will include multiple topics. Announcements for these sessions and zoom links will be made on the listserv and at greaterfarmland.org/upcoming-gfca-events.

DID YOU KNOW?

- The speed limit along Tilden Lane has been reduced from 30 MPH to 25 MPH. Please be extra-cautious. This change was made to promote pedestrian and bike safety. Blocked entrance and exit routes, with resulting backups, from Luxmanor Elementary School and Tilden Middle School have made Tilden Lane particularly dangerous.
- Montrose Parkway has been renamed! It is now Josiah Henson Parkway, and the signage along the route has already been changed.
- We have welcomed 424 members into GFCA membership; our goal remains at 500 households. Members will receive a printed directory in mid-late summer and are can enjoy Community Day. Non-members can pay \$35 for the household on Community Day or can join, in advance, at greaterfarmland.org/membership.



ELECTION NEWS AND RESOURCES

July 19 is Primary Election Day. Early voting will be available at selected locations, July 7 through July 14.

County Council members, the county executive, and MD governor are among the races on the ballot. The outcomes of the primary election often determine local and state policy. For information, see the following sites:

- 777vote.org - Montgomery County Board of Elections for official information, districts, voter registration
- vote411.org/maryland— League of Women Voters site for candidate questionnaires and sample ballot
- bethesdamagazine.com/bethesda-beat/2022-primary-voters-guide/ - Voter Guide, Bethesda Magazine

Both the state and the county have been redistricted. We are now in Congressional District 8. For Montgomery County council races, we are in District 4, which is a bowtie shape from North Bethesda to Takoma Park.

TEEN JOB LIST

Are you a teen looking for babysitting or odd jobs within the community? Or, are you a neighbor looking for someone to weed your garden, carry things you can't manage, or babysit? Wendy Perry maintains a Teen Job List, Email wendyperry6713@gmail.com.

OUTREACH TO HELP

Our wonderful neighbors continue to assist with food, clothing, school supply drives, environmental action, etc. Watch the listserv for opportunities of all kinds, be it financial, spiritual, or labor.



311 SERVICE

Call "311" to Montgomery County's Call Center, or go online to mc311.com, to report a repair needed for a street light on a metal pole, dead street tree, potholes, permitting questions, or any other county business.

NORTH BETHESDA VILLAGE NEWS AND EVENTS

by Jean Hochron
NORTH BETHESDA VILLAGE is a volunteer-led organization that supports community members, aged 55+, residing in the 20852 zip code. For information about our upcoming events, and to join our email distribution list, visit our website at www.northbethesdavillage.org or contact us directly at northbethesdavillage@gmail.com.

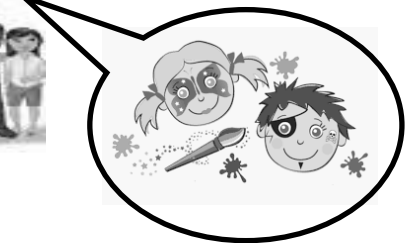
THE COMMUNITY LISTSERV

The listserv is GFCA's primary means of communication. Here's where we exchange items & plants, make suggestions, coordinate meetings, discuss issues, offer charitable opportunities, and much more. If you're not one of the 650+ members of our email listserv, join now. It's free and open to all community residents. Our listserv is hosted by groups.io.

To join, email GFCA+subscribe@groups.io.

To send an email to everyone on the listserv, address your email to main@gfca.groups.io.

Let's Get The Party ON!



SATURDAY, JUNE 11, 1-4 PM
BEHIND FARMLAND ELEMENTARY SCHOOL

GREATER FARMLAND'S FAMOUS COMMUNITY DAY

Join us for

- TexMex feast by Gringos & Mariachis Catering
- Tents & chairs for adult to socialize
- Desserts brought by us, as potluck
- Pony rides & Petting zoo
- Face Painting
- Bounce house
- DJ and prizes

Our community party is open to everyone and is FREE for GFCA member households. If you aren't a member, \$35 at the gate will admit your household. To avoid a line and join ahead of time, go to greaterfarmland.org/membership for instructions and easy online payment.

Want to volunteer to help on party day? Email Kathy Hoffman, katbhoff@comcast.net.

This year, we will reduce our earth impact while we enjoy our party. Look for food scrap recycling and compostable tableware disposal bins. If you have suggestions, or want to help with the recycling effort, contact Marjorie Raley or Marta Vogel, marjorie.rale@gmail.com or marta@limelightdrama.com.

IS YOUR INFORMATION CORRECT IN THE DIRECTORY? WILL YOU RECEIVE A PRINT DIRECTORY THIS SUMMER?

Paid-up members will receive one print directory per household. We anticipate distribution to occur sometime in July to August. Members also have access to view all household listings in the online directory and in the mobile app. If you haven't paid dues yet, there's still time to be included in the print distribution. Contact membership@greaterfarmland.org or call me at 301-704-2913, if you need instructions.

Please check your household listing to see if there's anything you want to change, add, or delete. Log into gfca.membershiptoolkit.com to confirm your listing and membership status. Every household has listing in the directory, regardless of membership, and you can edit yours by registering an account on that site. The directory is private and available only to our community members.

Questions? Email directory@greaterfarmland.org. I'll be happy to look up your membership status and/or send you a password reset link so you can log into the directory.

Want to **advertise in our directory**? For details, contact stephanie@atozconnect.com or call 240-206-6273. Don't delay, as time is short for inclusion in the print directory. Ads appear in the print & online versions.

Emily Mintz, GFCA membership & directory chair



HOW DO YOU THROW A PARTY FOR THE SOLAR SYSTEM? YOU PLAN IT.

Riddles like this one have been entertaining the neighborhood since fall of 2019, courtesy of Farmland Elementary School sign and the Bizjak family. Old Farm residents since 2009, the Bizjaks—Ernie and Tara, and their daughters, Maya and Adele—saw the PTA's call for help with the sign as an opportunity to engage the whole community and have fun. Since then, the neighborhood has enjoyed new jokes posted every week or two, even when school is out or when the sign's cover has frozen shut.

The riddles come from various sources. Sometimes a community member emails a joke. Occasions like the 4th of July or even themes like the popular "dad" jokes provide great material. Sometimes, the Bizjaks make up their own riddles. First grader Maya contributed, "What is a cat's favorite color? Purr-ple!" Third grader Adele tells this one: "I have a joke about a piece of paper. Never mind—it's tear-ible."

The riddles on the FES sign have generated a lot of positive feedback, the Bizjaks say, along some great riddle suggestions. To share yours with the Bizjaks, you can email farmlandesboard@gmail.com.

2022 Membership—Renew or Join NOW
GreaterFarmland.org/membership

Your Civic Association is an all-volunteer effort
By Neighbors for Neighbors

SPRING NEWSLETTER 2022



Greater Farmland Civic Association
Ed Rich, President
11703 Hitching Post Lane
North Bethesda, MD 20852